



The Old Chapman Farm is named after Gar-ey and Harriet Chapman, who established a house and farm here in 1834. After 1886, Burrills, Colbys, Colsons, Chutes and Smiths held the deed. This part of Bucksport was settled by Europeans as early as 1790, and first called the Long Pond Settlement and then (around 1900) Santiago. Cellar holes, stone walls, old orchards and a cemetery are all that remain of this once-busy village.



Please join us!

Great Pond Mountain Conservation Trust con-serves land, water and wildlife habitat for the com-munities of northwest Hancock County, Maine. Please join us by:

- Becoming a member. You can donate online or send a check to our address below.
- Joining our e-list from our website and finding us on Facebook
- Volunteering! Consider volunteering for trail or boundary work, maintenance projects, moni-toring and more!

Contact Us:

By mail: PO Box 266,
Orland, ME 04472

Visit our office: 155 Low-er Main Street, Bucksport (just east of McDonald's)

(207) 469-6929
info@greatpondtrust.org
www.greatpondtrust.org



OLD CHAPMAN FARM

Bucksport, Maine

Trail & Visitor Guide



Visit the Property

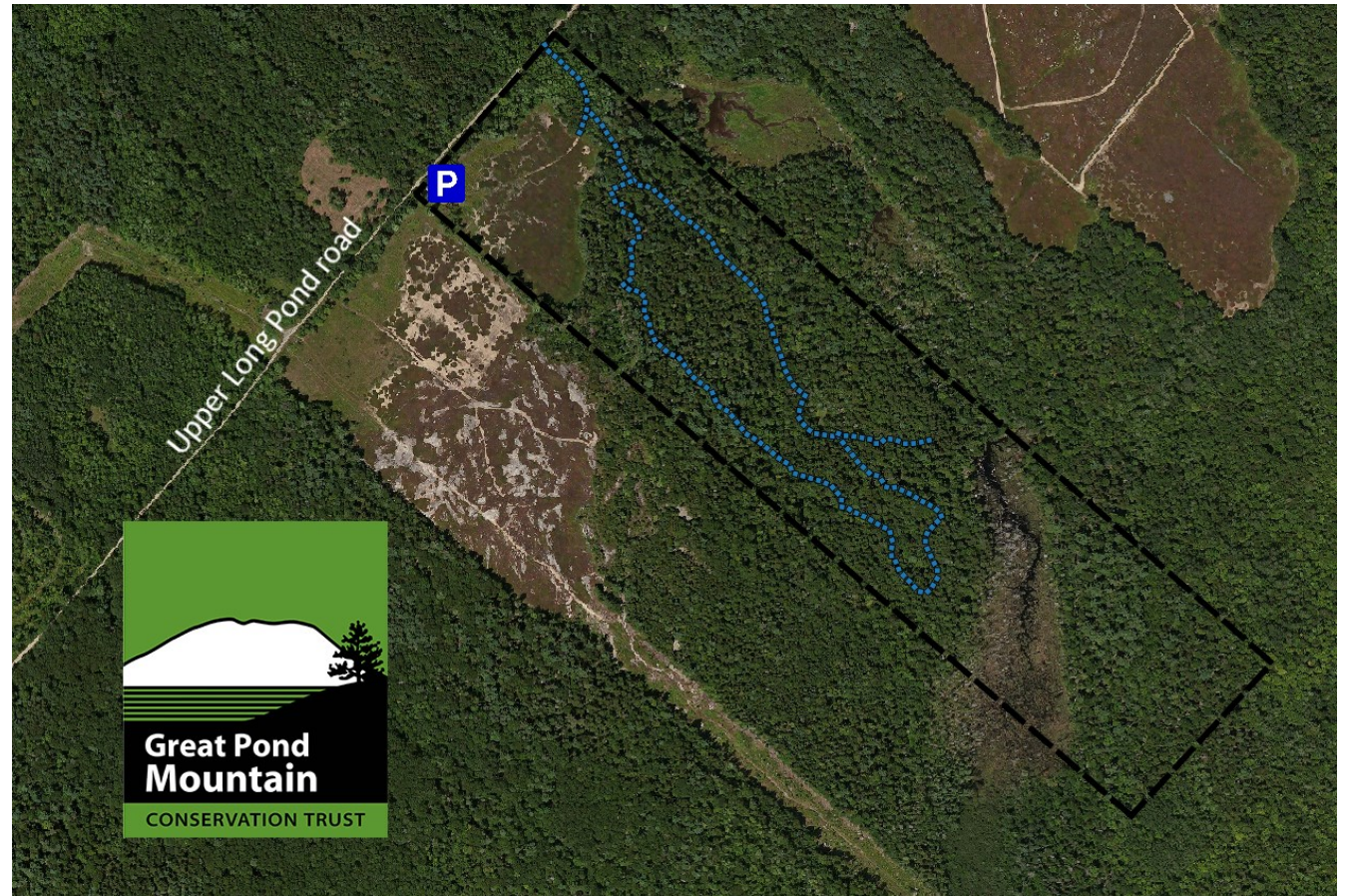
Great Pond Mountain Conservation Trust received this property as a donation in 2015. You are welcome to visit and:

- Hike our 2-mile trail
- Hunt for deer, turkeys, grouse, etc.
- Take in the amazing view from our 5.5 acre blueberry field
- Ask us how to order blueberries! The field is leased, so please don't pick your own.

You may access the property by bike, snowmobile or ATV; thanks for not riding on our hiking trail or across the field.

How to get there

The farm is 2.5 miles north of the Mast Hill Road and Moosehorn Drive intersection. Upper Long Pond Road is a dirt road leaving Moosehorn Drive; it is maintained to the town sludge storage facility. North of that the road becomes rough and you'll need good ground clearance. April 15 to Nov. 15, you may park in a signed area at the town facility and walk/bike 1.1 mile to the farm. Parking is also available 0.4 miles north at the private com-



posting facility; it's a 0.7 mile walk from there. Adventurous drivers will find a small parking area at the farm. Do not attempt to drive to the property from the north; the bridge over Colby Brook is unsafe for cars.

Hiking on the Old Chapman Farm

Hikers, hunters and birdwatchers will enjoy the loop trail that starts at the bottom of the hill (just before the bridge). From the parking lot, it's a moderately easy 2-mile walk through a varied forest with many old trees and large boulders. There is a short spur trail to an overlook with a view across a

beaver meadow. Hunters, please call 469-6929 or e-mail info@greatpondtrust.org for permission.

